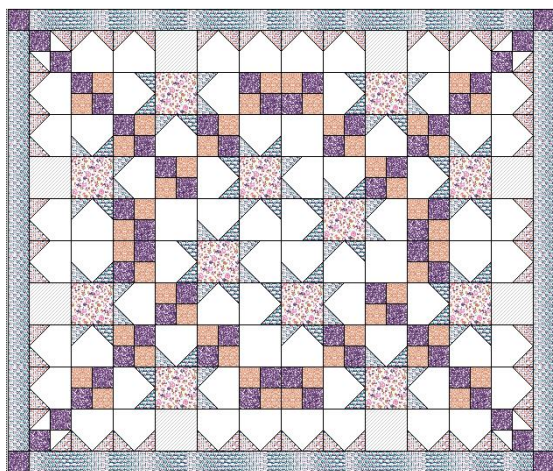




Perfect Occasions
FABRIC
FREEDOM



Water Colour Swirls Quilt Three

Designed by Hazel Jeffrey

Size 76" x 64"

All fabrics are from Water Colour Swirls by Fabric Freedom

Please read through all the instructions before you begin

- | | |
|-------------------------------|----------------------|
| 1. FF306-3 Large Flowers | 1/2 yard – 50cm |
| 2. FF307-3 Blender | 1/2 yard – 50cm |
| 3. FF308-3 Circles | 1/2 yard – 50cm |
| 4. FF309-3 Small Flowers | 1/2 yard – 50cm |
| 5. FF310-3 Flowers and Leaves | 1.1/4 yard – 1.25mtr |
| 6. White | 2.1/2 yard – 2.5mtr |
7. For the backing and binding use fabric 1: 4.1/2 yards – 4.25mtr

You will also need a piece of wadding approximately 80" x 68".

Cutting

From fabric 1 cut twelve 6.1/2" squares, two 80" length of fabric one across the width of fabric, trim selvage off and then sew together to create one large pieces 80" x 68". From the remaining fabric cut 2.1/2" lengths for the binding.

From fabric 2 cut fifty six 3.1/2" squares and four 2.1/2" squares for border

From fabric 3 cut forty eight 3.1/2" squares,

From fabric 4 cut twenty eight 3.7/8" squares

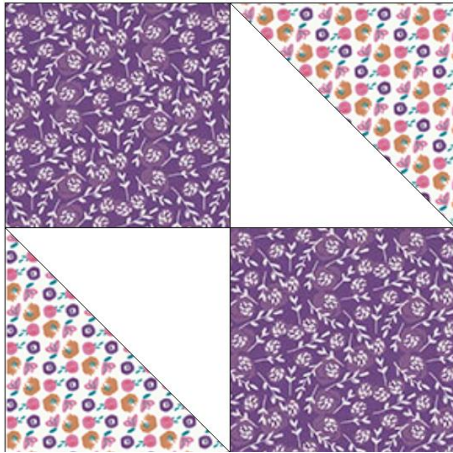
From fabric 5 cut ninety six 3.7/8" squares, cut and piece 2.1/2" strips: 65.1/2" for border

From fabric 6 cut four 3.7/8" squares and eighty 6.1/2" squares

All measurements include 1/4" seam allowances.

Sewing

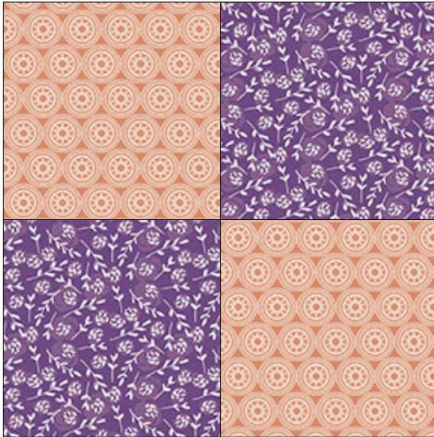
This quilt is made up of four different blocks.



Block 1

Make half square triangle units using the 3.7/8" squares in fabric 4 or white, also fabric 4 with white. Place two squares with right sides together and mark a line along the diagonal. Sew a 1/4" seam either side of the marked line. Cut along the line to produce two half square triangle units from each pair of squares. Make 4 blocks.

Block 2



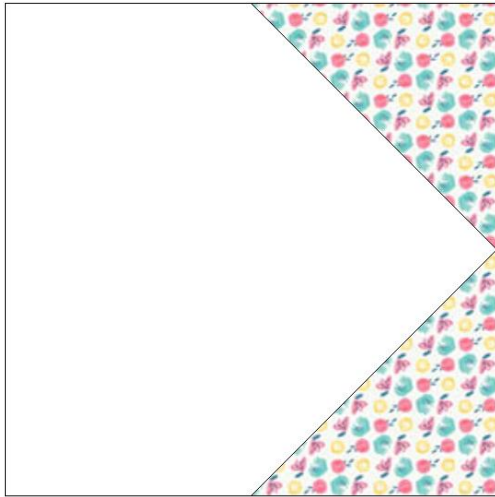
Use 3.1/2" squares of fabric 2 and 3 make 24 four-patch units.

Block 3



Take a 6.1/2" square of white and sew two 2.1/2" squares of fabric 4 and fabric 5 to each corner as shown. Make 8 of these.

Block 4



Take a 6.1/2"square of white and sew two 2.1/2" squares of fabric 4 to one side as shown. Make 28 of these.

Take a 6.1/2"square of white and sew two 2.1/2" squares of fabric 5 to one side as shown. Make 40 of these.

All of these blocks will be rotated within the quilt.

Finishing the Water Colour Swirl Quilt

Arrange the blocks in ten rows of twelve blocks as follows:

Row 1 and Row 10 - start with a block 1, two of block 4, a block 3, four of block 4, a block 3, two of block 4 and a block 1

Row 2 and Row 9 - start with a block 4, a block 2, a block 4 and a fabric one square, then a block 4, 2 of block 2, a block 4 a fabric one square, then a block 4, and a block 2

Row 3 - start with one each of block 4, a block 2, a block 4, a block 2 a block 4, and fabric 6 square, a block 2,a block 4, a block 2 and then one each for block 4

Row 4 - start with a block 3, a fabric 1 square, a block 4, a block 2, a block 4, a fabric 1 square, 2 of block 4, a block 2, a block 4 a fabric 1 square and a block 3

Row 5 - start with one each of block 4,a block 2, a fabric 6 square, three of block 4, a fabric 1 square, a block 4, a block 2 and then one each of block 4

Row 6 - start with one each of block 4,a block 2, a block 4, a fabric 1 square, three of block 4, a fabric 6 square, a block 2 and then one each of block 4

Row 7 - start with a block 3, a fabric 1 square, a block 4, a block 2, two of block 4, a fabric 1 square, a block 4, a block 2, a block 4, a fabric 1 square, a block 3

Row 8 - start with one each of block 4, a block 2, a block 4, a block 2, a fabric 6 square, a block 4, a block 2,a block 4, a block 2 and then one each for block 4

Sew the rows to each other.

For the border sew the two 76.1/2" lengths of fabric 5 to each side of the quilt and sew the two 2.1/2" fabric 2 squares to each end of two 76.1/2" strips then sew to the top and bottom.

For the backing fabric you will need a 80" x 68" of both backing fabric 1 and wadding.

For the binding, sew the strips of fabric 1 together to give one very long strip to make the binding.